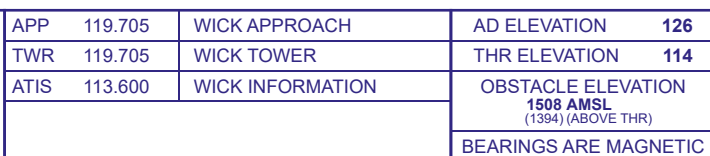


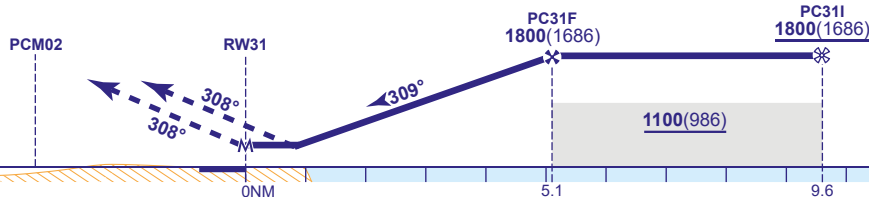
**WICK
RNP
RWY 31**
(ACFT CAT A,B,C)



TRANSITION ALTITUDE
3000

TCH 50

Continuous climb to **2000**, initially climb straight ahead to **PCM02**, and at **2000** turn right to **NDB WCK**, to join the hold or as directed.



Aircraft Category		A	B	C	Rate of descent	G/S KT	160	140	120	100	80
OCA (OCH)	LNAV	440(326)	440(326)	440(326)		FT/MIN	850	740	640	530	430
VM(C)OCA (OCH AAL)	Total Area	630(504)	630(504)	1090(964)							
	North of RWY 13/31	530(404)	620(494)	720(594)							

NOTES	<p>1 Use of RNP procedure is strictly PPR from the aerodrome operator.</p> <p>2 Approaches via ULMOD not permitted when D809(S) is notified as active.</p> <p>3 Missed approach reverts to conventional navigation at PCM02.</p>
--------------	---

CHANGE (12/21): EGNOS AND LPV REMOVED.